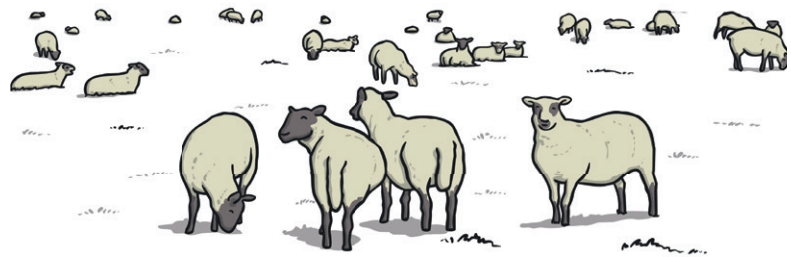


Sheep Life Cycle

There are more than 60 types of sheep in Britain. A group of sheep is called a herd, flock or mob. Sheep are kept for wool and meat.



1



What happens during the first stage?

Lamb

Baby sheep are called lambs.

Lambs are born between January and May, but usually in mid-March.

2



What happens during the second stage?

Yearling and Hogget

A sheep that is 1-2 years old is called a yearling or hogget.

Adult female sheep are called ewes.

Adult male sheep are called rams.

Some rams and some ewes have horns.

Ewes are pregnant for 142 to 152 days.

3



What happens during the third stage?

Sheep – Ewes and Rams

Sheep are herbivores that eat mainly grass, but also grain.

During the winter, sheep are often kept in a 'hoop house' and they feed on grass hay.

Sheep usually live between 10 and 12 years, but can live for up to 15 years!

The oldest sheep on record lived to 23 years old.

Photo courtesy of (andrew_j_w@flickr.com) - granted under creative commons licence - attribution

Questions about the Sheep Life Cycle

1. How many types of sheep are there in Britain?

2. What can a group of sheep be called?

3. What are young sheep called?

4. What is an adult female sheep called?

5. What is an adult male sheep called?

6. How long are ewes pregnant for?

7. Are sheep carnivores or herbivores?

8. How old did the oldest sheep on record live to?

Questions about the Sheep Life Cycle

Answers

1. How many types of sheep are there in Britain?

There are more than 60 types of sheep in Britain.

2. What can a group of sheep be called?

A group of sheep is called a herd, flock or mob. (Accept any 1 or a combination)

3. What are young sheep called?

Baby sheep are called lambs.

4. What is an adult female sheep called?

Adult female sheep are called ewes.

5. What is an adult male sheep called?

Adult male sheep are called rams.

6. How long are ewes pregnant for?

Ewes are pregnant for 142 to 152 days.

7. Are sheep carnivores or herbivores?

Sheep are herbivores.

8. How old did the oldest sheep on record live to?

The oldest sheep on record lived to 23 years old.

Sheep Life Cycle

There are more than 60 different breeds of sheep in Britain. Around the world, there are over 1 billion sheep!

Domesticated sheep are kept for wool and meat. Sheep have great memories and are intelligent. They are particularly good at problem-solving!

A group of sheep is called a herd, flock or mob and they like to stay together and follow the leader.



What happens during the first stage?

Lamb

Baby sheep are called lambs. Lambing season is the time of year when lambs are born. It takes place between January and May, but usually in mid-March. Newborn lambs usually weigh around 7kg. Lambs at 4 months old can be used for meat and normally weigh around 35kg.



What happens during the second stage?

Yearling and Hogget

A sheep between 1 and 2 years old is known as a yearling or hogget. The meat of a sheep that is more than 1 year old is also called hogget. Adult female sheep are called ewes and adult males are called rams. Some rams and some ewes have horns, but it depends on their breed. Ewes give birth to their first lambs when they are between 7 months and 2 years old. Ewes are pregnant for 142 to 152 days. Rams can be used for breeding from 7 months old too.



What happens during the third stage?

Sheep – Ewes and Rams

Sheep are herbivores that eat mainly grass, but also grain. During the winter, sheep are often kept in a 'hoop house' and they feed on grass hay. The beginning of the sheep year is in October, when one ram is put in with each group of ewes for breeding.

The meat of an adult sheep is called mutton, but the living, mature sheep are still known as ewes and rams. Sheep usually live between 10 and 12 years, but can live for up to 15 years. The oldest sheep lived to 23 years old and was a Merino breed.

Photo courtesy of (andrew_j_w@flickr.com) - granted under creative commons licence - attribution

Questions about the Sheep Life Cycle

1. How many sheep are there around the world?

2. What can sheep be used for?

3. What do they like to do as part of a group?

4. When is lambing season?

5. How heavy are newborn lambs usually?

6. What are adult female and male sheep called?

7. How long are ewes pregnant for?

8. Are sheep carnivores or herbivores?

9. Where do sheep often stay in the winter?

Questions about the Sheep Life Cycle

Answers

1. How many sheep are there around the world?

There are over 1 billion sheep around the world!

2. What can sheep be used for?

Domesticated sheep are kept for fleece and meat.

3. What do they like to do as part of a group?

They like to stay together and follow the leader.

4. When is lambing season?

Lambing season takes place between January and May, but usually in mid-March.

5. How heavy are newborn lambs usually?

Newborn lambs usually weigh around 7kg.

6. What are adult female and male sheep called?

Adult female sheep are called ewes and adult males are called rams.

7. How long are ewes pregnant for?

Ewes are pregnant for 142 to 152 days.

8. Are sheep carnivores or herbivores?

Sheep are herbivores.

9. Where do sheep often stay in the winter?

During the winter, sheep are often kept in a 'hoop house' and they feed on grass hay.

Sheep Life Cycle

There are more types of sheep in Britain than in any other country - more than 60 different breeds. Around the world, there are over 1 billion sheep! China has the highest number of sheep. Domesticated sheep are kept for wool and meat. Sheep have great memories and are intelligent. They are particularly good at problem-solving. A group of sheep is called a herd, flock or mob and they like to stay together and follow the leader. Sheep can even see behind themselves without moving their head, because they have great vision!



1

What happens during the first stage?

Lamb

Baby sheep are called lambs. Lambing season is the time of year when lambs are born. The exact time depends on the breed of sheep and location. It takes place between January and May, but usually in mid-March. You will be able to spot many packs of new lambs in springtime, around Easter, running, jumping and playing games. Newborn lambs usually weigh around 7kg. At 4 months old, lambs can be used for meat and normally weigh around 35kg. Weaning age is at 60 – 70 days old. This is when lambs begin to stop suckling milk from their mothers, and will start to eat grass and other food.



2

What happens during the second stage?

Yearling and Hogget

A sheep that is between 1 and 2 years old is known as a yearling or hogget. The meat of a sheep that is 1 year old is also called hogget. Different sheep breed for the first time at different ages. Adult female sheep are called ewes and they give birth to their first lambs when they are between 7 months and 2 years old. Ewes are pregnant for 142 to 152 days. Adult male sheep are called rams and they can be used for breeding from 7 months old too. Some rams and some ewes have horns, but it depends on their breed.



3

What happens during the third stage?

Sheep – Ewes and Rams

Sheep are herbivores that eat mainly grass. Sheep's stomachs have four chambers to break down their food. During the winter, sheep are often kept in a 'hoop house' and they feed on grass hay. Sheep also eat grain and sheep have to have jabs. The beginning of the sheep year is in October, when one ram is put in with each group of ewes for breeding. It is not good to mix young rams with older rams when they are in with ewes, as they can fight. The meat of an adult sheep is called mutton, but the living, mature sheep are still known as ewes and rams. Sheep can go to market between 4 and 8 years old. Sheep usually live between 10 and 12 years, but can live for up to 15 years. You can find out the age of a sheep by looking at its teeth. The oldest sheep on record lived to 23 years old and was a Merino breed.

Photo courtesy of (andrew_j_w@flickr.com) - granted under creative commons licence - attribution

Questions about the Sheep Life Cycle

1. How many sheep are there in the world? Which country has the highest number of sheep?

2. What are sheep good at?

3. What does their great vision allow them to do?

4. When is lambing season and what does it depend on?

5. What does 'weaning age' mean? How old is a lamb when this happens?

6. When do ewes have their first lambs?

7. What do rams do from 7 months old?

8. Are sheep carnivores or herbivores? What do they eat?

9. What can a sheep's teeth tell you?

10. How old can sheep live to?

Questions about the Sheep Life Cycle

Answers

1. How many sheep are there in the world? Which country has the highest number of sheep?

Around the world, there are over 1 billion sheep! China has the highest number of sheep.

2. What are sheep good at?

Sheep have great memories and are intelligent. They are particularly good at problem-solving.

3. What does their great vision allow them to do?

Sheep can even see behind themselves without moving their head, because they have great vision!

4. When is lambing season and what does it depend on?

The exact time of lambing season depends on the breed of sheep and location. It takes place between January and May, but usually in mid-March.

5. What does 'weaning age' mean? How old is a lamb when this happens?

Weaning age is at 60 – 70 days old. This is when lambs begin to stop suckling milk from their mothers, and will start to eat grass and other food.

6. When do ewes have their first lambs?

Ewes have their first lambs when they are between 7 months and 2 years old.

7. What do rams do from 7 months old?

Rams can be used for breeding from 7 months old.

8. Are sheep carnivores or herbivores and what do they eat?

Sheep are herbivores that eat mainly grass. Sheep's stomachs have four chambers to break down their food. During the winter, sheep are kept in a 'hoop house' and feed on grass hay. Sheep also eat grain.

9. What can a sheep's teeth tell you?

You can find out the age of a sheep by looking at its teeth.

10. How old can sheep live?

Sheep usually live up to 12 years old, but can live up to 15 years old. The oldest sheep on record lived to 23 years old.