

# What to do today

*IMPORTANT Parent or Carer – Read this page with your child and check that you are happy with what they have to do and any weblinks or use of internet.*

## 1. Read a poem

- Look at *Main Character*. What can you spot in this picture? What do you think might be happening?
- Read the *First Verse* of 'The Quangle Wangle's Hat'. Add labels to the picture to show the ribbons, bells and other features.
- Listen to the rest of the poem being read.  
<https://www.youtube.com/watch?v=KgrrTAFfDWO>
- Write answers to the *Poetry Questions*. Look back at the text to help you.

## 2. Revise expanded noun phrases

- Use the *PowerPoint on Expanded Noun Phrases* or, if this is not possible, remind yourself using the *Revision Card*.
- Complete *Owl's Head Noun Hunt* and *Owl's Expanded Noun Phrases*.

## 3. Now for some writing

- Choose one of the *Quangle Wangle Creatures*.
- Fill in *Spotter's Guide* for this creature. Write a description of what they like, how they behave and where they live. Include expanded noun phrases in your description.

*Well done. Show your writing to a grown-up. Look together at the picture of the creature and where it is mentioned in the poem. You can check your answers to Owl's Head Noun Hunt and Expanded Noun Phrases at the end of this pack.*

## Try the Fun-Time Extra

Practise reading the poem out loud until you are really fluent with it.

## Main Character





## First Verse



On the top of the Crumpetty Tree  
The Quangle Wangle sat,  
But his face you could not see,  
On account of his Beaver Hat.  
For his Hat was a hundred and two feet wide,  
With ribbons and bibbons on every side  
And bells, and buttons, and loops, and lace,  
So that nobody ever could see the face  
Of the Quangle Wangle Quee.

From The Quangle Wangle's Hat by Edward Lear

## The Quangle Wangle's Hat by Edward Lear

I  
On the top of the Crumpetty Tree  
The Quangle Wangle sat,  
But his face you could not see,  
On account of his Beaver Hat.  
For his Hat was a hundred and two feet wide,  
With ribbons and bibbons on every side  
And bells, and buttons, and loops, and lace,  
So that nobody ever could see the face  
Of the Quangle Wangle Quee.

II  
The Quangle Wangle said  
To himself on the Crumpetty Tree, —  
"Jam; and jelly; and bread;  
Are the best of food for me!  
But the longer I live on this Crumpetty Tree  
The plainer than ever it seems to me  
That very few people come this way  
And that life on the whole is far from gay!"  
Said the Quangle Wangle Quee.

III  
But there came to the Crumpetty Tree,  
Mr. and Mrs. Canary;  
And they said, — "Did ever you see  
Any spot so charmingly airy?  
May we build a nest on your lovely Hat?  
Mr. Quangle Wangle, grant us that!  
O please let us come and build a nest  
Of whatever material suits you best,  
Mr. Quangle Wangle Quee!"

#### IV

And besides, to the Crumpetty Tree  
Came the Stork, the Duck, and the Owl;  
The Snail, and the Bumble-Bee,  
The Frog, and the Fimble Fowl;  
(The Fimble Fowl, with a corkscrew leg;)  
And all of them said, — "We humbly beg,  
We may build our homes on your lovely Hat, —  
Mr. Quangle Wangle, grant us that!  
Mr. Quangle Wangle Quee!"

#### V

And the Golden Grouse came there,  
And the Pobble who has no toes, —  
And the small Olympian bear, —  
And the Dong with a luminous nose.  
And the Blue Baboon, who played the Flute, —  
And the Orient Calf from the Land of Tute, —  
And the Attery Squash, and the Bisky Bat, —  
All came and built on the lovely Hat  
Of the Quangle Wangle Quee.

#### VI

And the Quangle Wangle said  
To himself on the Crumpetty Tree, —  
"When all these creatures move  
What a wonderful noise there'll be!"  
And at night by the light of the Mulberry moon  
They danced to the Flute of the Blue Baboon,  
On the broad green leaves of the Crumpetty Tree,  
And all were as happy as happy could be,  
With the Quangle Wangle Quee.

By Edward Lear

## Poetry Questions

**What do you like about the poem?** Is there anything you dislike? What does it remind you of? What mood would you say this poem has?

**What patterns can you find?** Is there a regular rhyme? Can you find any examples of alliteration\*? What repetition is there? What purpose does it serve?

**What interesting words or phrases can you find?** What do they mean? Are there any vivid descriptions?

*\*Alliteration is where several words begin with the same sound? E.g. Frog and Fimble fowl.*



## Revision Card – Expanded noun phrases

### Nouns

A **noun** names a **person, place, idea, thing** or **feeling**.



an owl  
the cat  
a boat  
that surprise

In front of a **noun**, we often have ....

**a an the this that his her their my your**

### Noun Phrases

A **noun phrase** adds extra detail to the **noun**.



the **bright, golden bird**  
a **chirpy and cheerful robin**  
this quite **amazing woodpecker**  
that truly **elegant owl**

It can be made by adding an adjective or two.



### Noun Phrases

A **noun phrase** adds extra detail to the **noun**.

The main noun is called the head noun.

a beautiful pea-green boat  
a horribly bored man  
an exceedingly large nose  
a very sharp chin like a pin  
a hilarious limerick with funny characters

The head noun  
is what the  
phrase is  
about.

Can you spot the head noun in each of these phrases



### Expanded Noun Phrases

You can develop an **expanded noun phrase** by using a **prepositional phrase**.

*The wild, windswept island*

*The wild, windswept island **over the sea***

*The wild, windswept island **beyond the horizon***

*The wild, windswept island **with palm trees***

The **phrase** modifies the noun.

**Useful prepositions**  
with, of  
by, from, on, under,  
beyond, below,  
between, inside, next  
to, over, in, outside

## Owl's Head Noun Hunt



Owl is out looking for head nouns.

Underline the head noun in each of these phrases so that he can pounce on them!

Remember – phrases may contain more than one noun. Owl is hunting for the head nouns.

the elegant owl      the beautiful pussycat

the small wooden guitar      the silver runcible spoon

the wise old turkey with a book in his claws      juicy fruits on the branches of the bong tree

a friendly young pig on the sandy beach

the large hairy nose with a light beneath its nostrils

very tall and leafy trees beside a wide river      a kind but buzzing bee next to two wasps

the timid and shivering bird inside the bush      a funny woman beside a curious old harp

Now help Owl to build noun phrases.

Using lined paper, select a head noun and write it down.

e.g. honey

Now add an adjective.

e.g. sticky honey

Now add a second adjective.

e.g. sticky, golden honey

Write a noun phrase like this for each head noun.

### **\*CHALLENGE\***

Try writing some sentences using your noun phrases.

e.g. The owl brought some sticky, golden honey in a jar.



## Owl's Expanded Noun Phrases



*Owl's noun phrases have become separated from their prepositional phrases.  
Can you help him join them back together? Owl has managed to do one himself.*

<i>The twinkly stars</i>	<i>on the flower</i>
<i>An irritated bee</i>	<i>around the moon</i>
<i>Some sticky honey</i>	<i>with a ring on its nose</i>
<i>A shiny pound coin</i>	<i>by the hill</i>
<i>A wriggling Pig</i>	<i>on a plate</i>
<i>The wise old Turkey</i>	<i>inside a jar</i>
<i>The sweet, juicy quince</i>	<i>under a £5 note</i>

*Now Owl wants to finish these noun phrases with prepositional phrases.  
Owl has managed the first one but now he needs your help!  
Circle the preposition you have used for each.*

*The beautiful pea green boat near the harbour*

*The sandy beach \_\_\_\_\_*

*A tall and leafy bong tree \_\_\_\_\_*

*Two funny old ladies \_\_\_\_\_*

*The quiet old man \_\_\_\_\_*

*Edward Lear's long beard \_\_\_\_\_*

*in on under above next to besides with through between  
inside below by from of near*

## Quangle Wangle Creatures



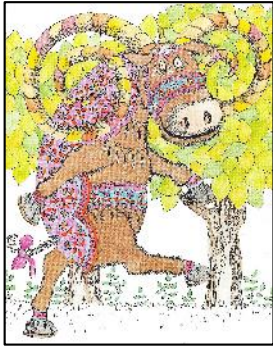
*The Bisky Bat*



*The Fimble Fowl*



*The Attery Squash*



*The Orient Calf*



*The Blue Baboon*



*The Dong*



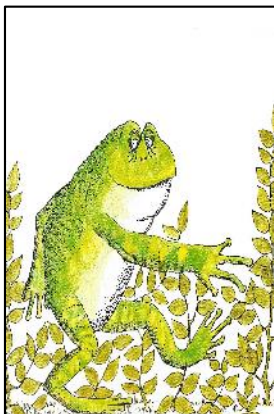
*The Olympian Bear*



*The Golden Grouse*



*The Pobble*



*The Frog*

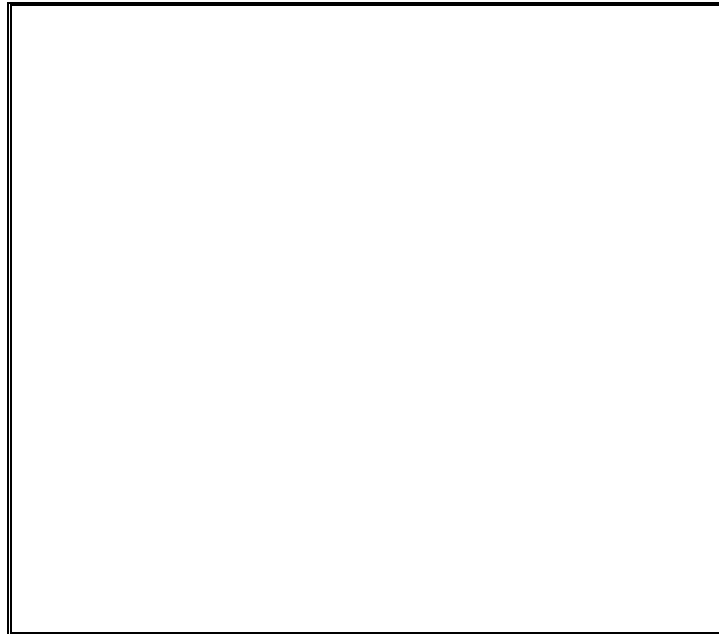


*The Snail The Owl*



*The Duck The Bee The Stork*

# Spotter's Guide



**Name:** \_\_\_\_\_

**Description:**

---

---

---

---

---

---

---

---

---

---

---

---

---

---

**Spotted on (date):**

**Location:**



## Owl's Head Noun Hunt/Expanded Noun Phrases ANSWERS

*Underline the head noun in each of these phrases so that he can pounce on them! Remember – phrases may contain more than one noun. Owl is hunting for the head nouns.*

the elegant owl      the beautiful pussycat

the small wooden guitar      the silver runcible spoon

the wise old turkey with a book in his claws      the juicy fruits on the branches of the bong tree

a friendly young pig on the sandy beach

the large hairy nose with a light beneath its nostrils

very tall and leafy trees beside a wide river      a kind but buzzing bee next to two wasps

the timid and shivering young bird inside the bush      a funny woman beside a curious old harp

*An irritated bee on the flower*

*The twinkly stars around the moon*

*A wriggling Pig with a ring on its nose*

*The wise old Turkey by the hill*

*The sweet, juicy quince on a plate*

*Some sticky honey inside a jar*

*A shiny pound coin under a £5 note*