

c) Amir's method

		H	T	O	
		7	0	0	
	-	3	4	8	
		3	5	2	

		H	T	O	
		6	9	9	
	-	3	4	7	
		3	5	2	

Use Amir's method to work out $6,000 - 2,145$

		5	9	9	9														
	-	2	1	4	4														
		3	8	5	5														

3,855

d) Whose method do you prefer, Rosie's or Amir's?



4 Use the column method to work out the subtractions.

a) $500 - 341$

1	5	9				

c) $£3,000 - £2,782$

£	2	1	8			

b) $1,000 - 729$

2	7	1				

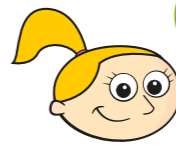
d) $10,000 \text{ mm} - 7,302 \text{ mm}$

2	6	9	8	mm		

5 A theme park has 3,002 light bulbs.
1,785 of the light bulbs are blue.
How many bulbs are not blue?
Use a method where you subtract 3 from each number.

1,217

6 Eva is working out $7,385 - 1,999$
 $7,385 - 2,000 = 5,385$
 $7,385 - 1,999 = 5,386$



I subtracted 2,000 from 7,385 and then added one on.

a) Explain why Eva's method works.
She is subtracting 1 less than 2,000 so she subtracts 2,000 then adds 1 back on

b) Explain a different method that Eva could have used.
The method should involve changing each number before subtracting.
She could add 1 to each number so the difference doesn't change and calculate $7,386 - 2,000$

c) Work out the subtractions.
 $4,512 - 2,999 =$ 1,513 $5,147 - 997 =$ 4,150
 $3,704 - 2,998 =$ 706