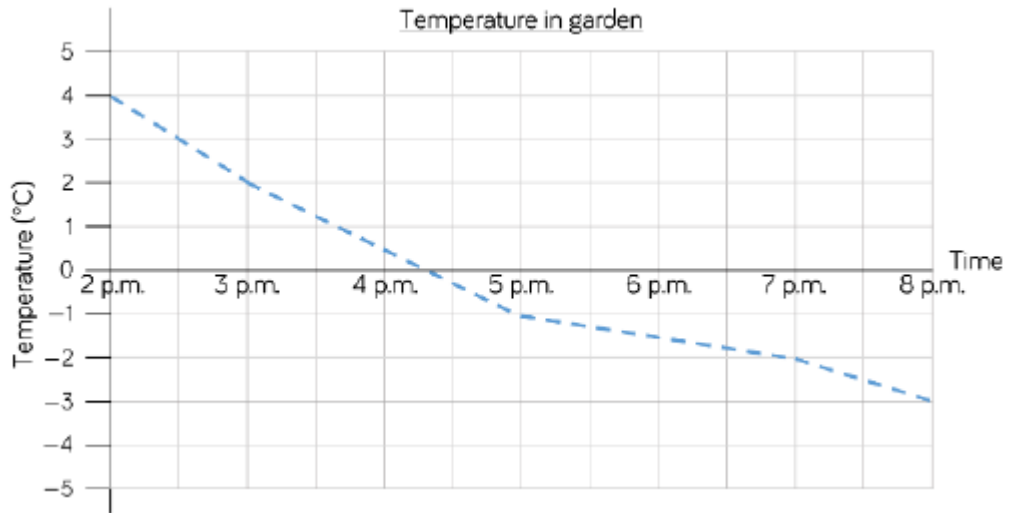




Fluency:

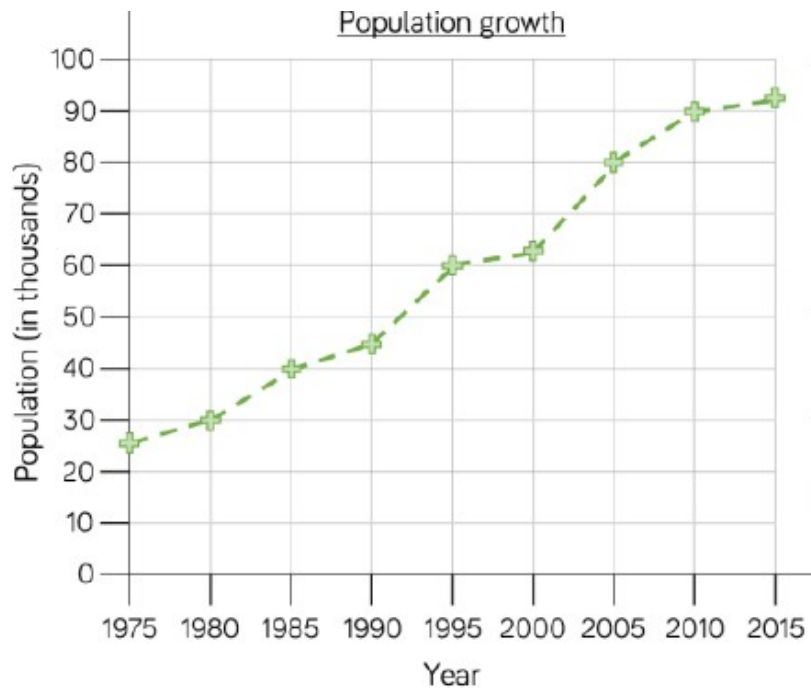
The graph shows the temperature in somebody's garden.

- 1 a) What was the temperature at 5pm? _____
- 1 b) What was the difference in temperature between 3pm and 7pm? _____
- 1 c) When was the temperature 4°C? _____
- 1 d) Estimate the time when the temperature was 0°C. _____
- 1 e) Estimate the temperature at 6pm. _____



This graph shows the change in population.

- 2 a) What was the population in 1985? _____
- 2 b) How much did the population grow between 1990 and 2010? _____
- 2 c) When was the population double the population of 1985? _____



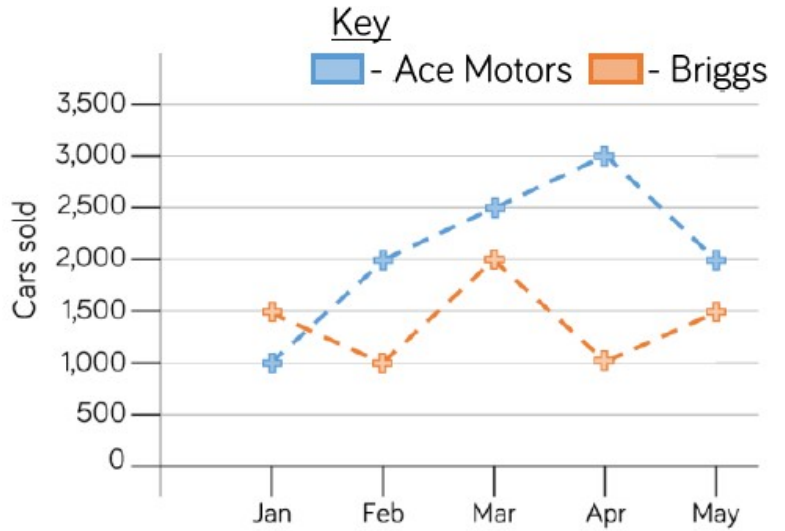


Reasoning:

3) Answer the following questions.

The graph shows how many cars were sold by two different companies in the first 5 months of 2017.

Blue represents Ace Motors and red represents Briggs.



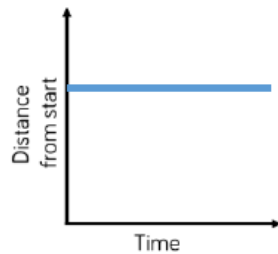
1) How many more cars did Ace Motors sell than Briggs in April?

2) For the first 3 months of the year compare the total sales for each company. Who sold more and by how many?

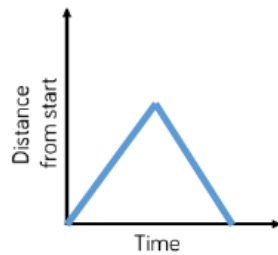
3) Crooks Motors sold 250 more cars than Briggs each month. Plot their sales on the graph.

Diving deeper:

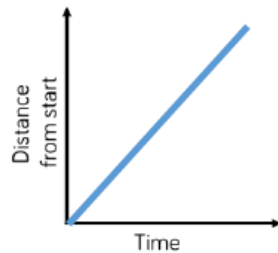
4) Match the graphs and activities. Explain how you know.



A car travels at constant speed on the motorway.



A car is parked outside a house.



A car drives to the end of the road and back.