

Name:

Date:

L.O.: I can understand, analyse and take action to keep our beaches safe/clean.

Task: Read the text while highlighting key facts.

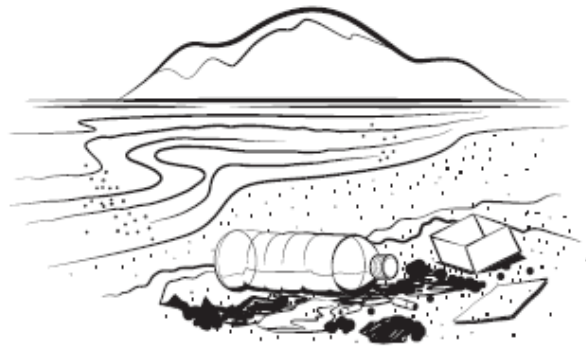
Looking After Our Beaches 1

The effect of human activity on the natural environment has caused great problems for native wildlife, but it can also cause problems for people. We enjoy natural environments for so many different reasons, but unless we protect them from the effects of our actions, we won't be able to enjoy them for much longer.

The Marine Conservation Society carries out a beach litter survey every year in the UK, called BeachWatch. In 2014, 301 beaches were part of the survey and the volunteers collected over two thousand pieces of litter per kilometre of beach.

Beach Litter - Are You Guilty?

Surveys show that a small amount of litter, such as fishing nets and rope, comes from the sea, but the majority of litter comes from the land. The litter commonly found includes plastic bottles, bags, wrappers and cans.



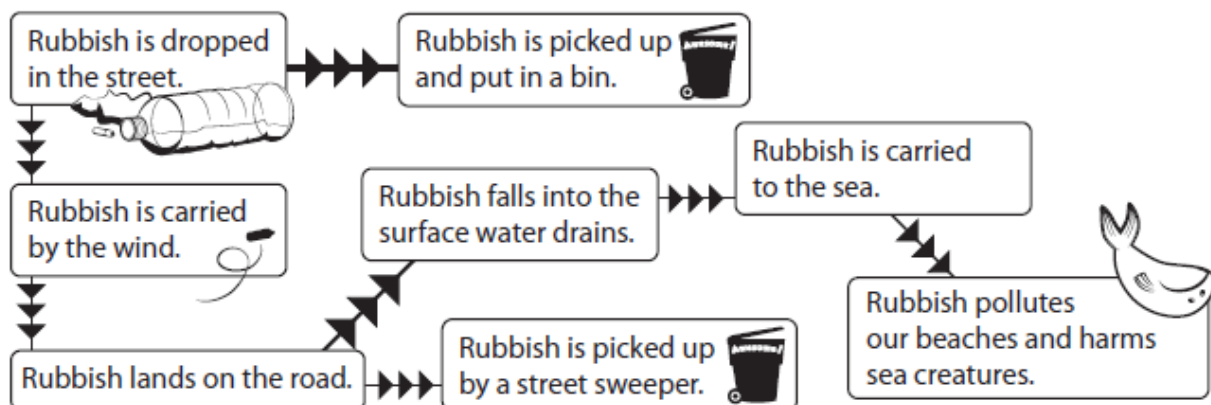
Beach Litter from Our Streets

You might be surprised to learn that visitors to the beach are not responsible for **all** of the litter on beaches. In fact, a lot of beach litter has ended up there indirectly because of drainage systems.

When it rains, some rainwater soaks into the ground and some flows down the street. Surface water drains collect the rainwater that flows down the street. Grates positioned on the edge of roads cover the holes that lead to the drains. Small pieces of litter are easily washed into the drains.

Before the water is flushed out into the sea, it passes through more grates, but these only stop large items of rubbish. The collection of small litter flows on, polluting the sea and, with the tides, races back onto our beaches.

So, the next time you think about dropping litter on the street, even a small sweet wrapper, remind yourself that it could end up on your favourite beach.



Task: Analyse the data/information.

• All: complete q. 1.

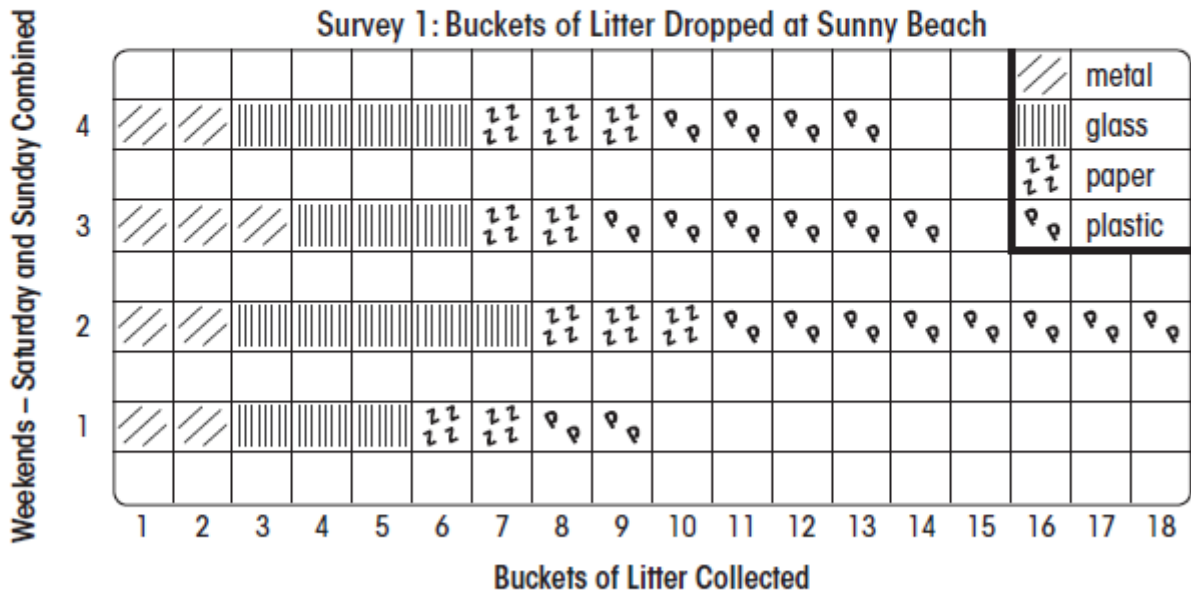
Most: complete q. 1-2

Some: complete q. 1-3

Looking After Our Beaches 2

To find out just how much litter was being dropped at **Sunny Beach**, the local council conducted a litter survey over four weekends. The council presented the results in an article in the local newspaper.

1. Study the graph and answer the questions.



- (a) The greatest amount of litter was dropped on weekend _____.
- (b) Over the four weekends, most of the litter was _____.

2. Another survey was conducted for four weeks after the article was printed.

- (a) On squared paper, present the results in a chart.
- (b) The results of the second survey were **better/worse** than the first. Circle.

Type of Litter	Weekends - Saturday and Sunday Combined			
	1	2	3	4
Metal	1	1	2	1
Glass	1	3	1	2
Paper	1	0	1	2
Plastic	2	4	3	1

- (c) The second survey showed the amount of litter had reduced by about: **one quarter** **one half** **three-quarters**

3. Write a report about the litter problem at Sunny Beach and how it was affected by the newspaper article. Include information given on page 25.

?

Beach litter can kill marine animals.

Research to discover examples of how our beach litter can kill. Find pictures to create a poster to encourage people to stop dropping litter.