

# Making Patterns With Shapes

## Adult Guidance with Question Prompts



Children use colours, shapes, rotation and direction to continue and create patterns. They describe patterns using the vocabulary: predict, continue, sequence, shape, repeat, turn, rotate, position and direction.

Here, children talk about shapes, positions and turns as they continue, complete and correct patterns. They then select and arrange shapes to create patterns for their friends to continue.

What can you tell me about this pattern?

What would come next? How did you know?

Which shape is used in this pattern?

How far has it been turned?

What do you need to remember when you draw the missing shapes?

What is the same about these shapes?

How far has the shape turned? In which direction?

Can you think of an alternative description?

Can you spot the odd one out?

What can you do to correct it?

Can you make a shape pattern for your friend to continue?

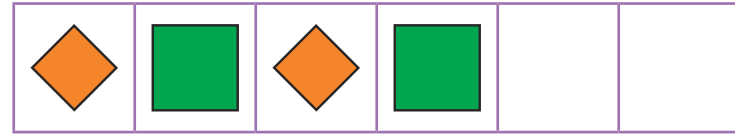
Think about the shapes, positions and turns that you use.



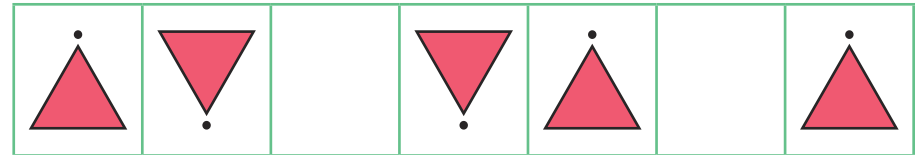
visit [twinkl.com](https://www.twinkl.com)



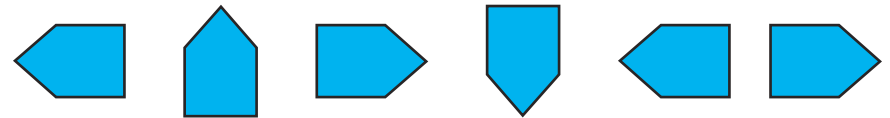
# Making Patterns With Shapes



Can you draw the next 2 shapes in the pattern?  
How did you know?

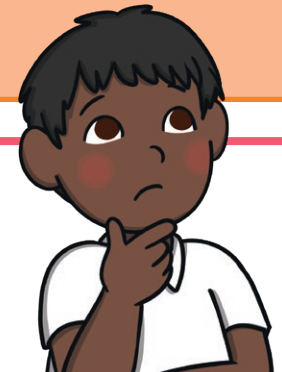


Can you draw the missing shapes?  
If the shapes are the same, what has changed?



Can you spot the mistake?  
How can you fix it?

Can you make a pattern for your friend to continue?



## Making Patterns With Shapes

### Adult Guidance with Question Prompts



Children use colours, shapes, rotation and direction to continue and create patterns. They describe patterns using the vocabulary: predict, continue, sequence, shape, repeat, turn, rotate, position and direction.

Here, children talk about positions and turns as they use the same shape to create patterns. They decide if a statement is true or false, then spot the odd one out. Children then describe a pattern for their friend to make.

**Pick a shape. What can you tell me about it?**

**What does it look like when rotated in different directions?**

**Can you use these differences to make patterns?**

**Can you describe your pattern?**

**What can you tell me about this pattern?**

**Which shape has been used? How has it been turned?**

**Is the sentence true or false?**

**Can you explain your reasoning?**

**Which shape has been used in this pattern?**

**What can you tell me about the way it has been rotated?**

**Does it matter which direction it has been turned?**

**Can you see a pattern?**

**Can you spot the odd one out? How do you know?**

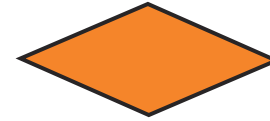
**Can you describe a pattern for your friend to make?**

**Think about the shape, turns and direction.**

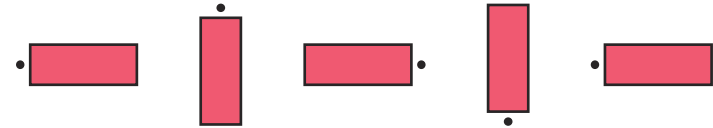
## Making Patterns With Shapes



Pick 1 shape.



Can you use the same shape to make different patterns?



True or false?

This pattern shows quarter turns.



Can you spot the odd one out?

How did you work it out?



Can you describe a pattern for your friend to make?

## Making Patterns With Shapes

### Adult Guidance with Question Prompts



Children use colours, shapes, rotation and direction to continue and create patterns. They describe patterns using the vocabulary: predict, continue, sequence, shape, repeat, turn, rotate, position and direction.

Here, children decide if a description is true or false by investigating shapes and how they have been turned. They use the terms quarter, half and whole turns to complete sentences. Children then demonstrate their understanding by creating their own patterns using quarter, half and whole turns.

Look at the triangles. How have they been turned?

Does it matter which direction?

What can you tell me about the rectangles?

Is the description true? Can you explain why?

Is there another way you can describe them?

What would the next shapes look like? How do you know?

What can you tell me about the shapes in this pattern?

Can you use the words quarter, half or whole to describe the turns of each shape? Which direction have they turned? Can you think of another way to describe them?

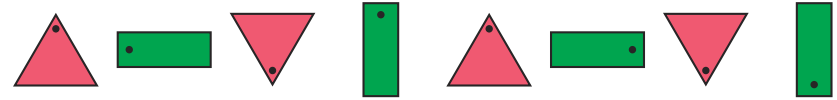
Can you create and describe a pattern to show quarter, half and whole turns in different directions?

## Making Patterns With Shapes



The triangles show half turns clockwise.

The rectangles show quarter turns clockwise.



Is this true?

What would the next 4 shapes look like?



Can you finish these sentences?

The triangles show \_\_\_\_\_ turns \_\_\_\_\_.

The rhombuses show \_\_\_\_\_ turns \_\_\_\_\_.

The pentagons show \_\_\_\_\_ turns \_\_\_\_\_.

quarter   half   whole   clockwise   anticlockwise

Can you make a pattern that shows quarter, half and whole turns?

Are the shapes turning clockwise or anticlockwise?

